



AUDICUS

Instruction Manual

**Recharging Aids
and Dock**



Charge!

We're thrilled to be on your hearing journey.
You hold in your hands a guide to using and caring for
your rechargeable hearing aid kit

Congrats, your hearing aid has been upgraded to allow the use of special rechargeable batteries, as well as standard batteries

That means less time replacing batteries and more time doing the things that matter most. This manual will guide you through how to use your new charging dock and batteries with your hearing aid.

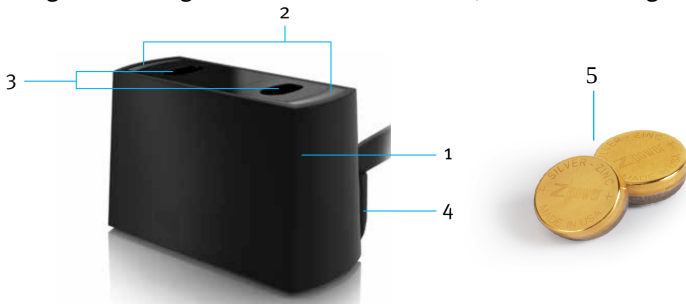
And remember, you're never on your own.

Reach out anytime, for anything at all.

(844) 616 7284 • contact@audicus.com

Quick reference

- 1 **Charging base** – charges your rechargeable hearing aids while you are not using them
- 2 **Indicator lights** – blinking green indicate your hearing aids are charging. Solid green indicate your hearing aids are fully charged. Red indicates an error.
- 3 **Charging slots** – insert your hearing aids into the charging slots so that the domes of both hearing aids are facing the same side of the charging base as the power cord. Magnets will hold the hearing aid when inserted correctly.
- 4 **Power cord** – plugs into the USB wall adapter and then into a power outlet
- 5 **Gold Batteries** – gold rechargeable hearing aid batteries. Only the gold batteries are rechargeable. Regular hearing aid batteries can be used, but not recharged.



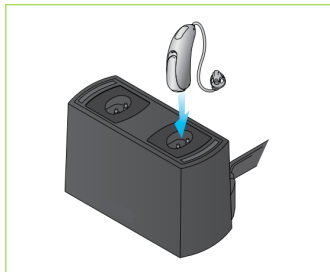
Operating instructions

Charging your hearing aid

1. Before charging, ensure the gold rechargeable batteries are in the aid and the charging dock is plugged into the wall or a USB outlet. Lightly hold your hearing aid from the top, and place in the charging slot. When the hearing aid is correctly inserted a magnet will hold it in place, and the nearest light will begin blinking green.
2. Once the green light is blinking your hearing aid is charging. When the light is solid green, the battery is completely charged. This will take 5-7 hours.

If the light is red, please review the the trouble-shooting section that follows.

3. You can remove your hearing aid before it's completely charged, but it's recommended to let the battery fully charge. It's best to leave your hearing aids in the charger anytime you're not using them; they won't overcharge.



Tips and care

Charging Tips

- If you receive a low battery warning from the hearing aid, place in the charging base for charging or replace the gold rechargeable batteries with non-rechargeable batteries.
 - Only the gold colored rechargeable batteries can be recharged.
- Charge the hearing aids daily - preferably overnight - before wearing them.
- If you don't intend to use your hearing aids for several days, it is best to either:
 - Remove the batteries, or
 - Leave the hearing aids in the charger while plugged into a power supply
- Do not place the hearing aids in the charger if the charger is unplugged: it will drain the battery.
- Charge the hearing aids at temperature between 50°F (10°C) and 104°F (40°C).
- Each battery should last for approximately one year. Please contact Audicus for replacements.

Cleaning

- Use a dry, soft tissue to remove any debris.
- Ensure contacts are clean by using a soft brush or cloth.
- Do not sterilize or disinfect the charger. Do not clean with alcohol, solvent or any other liquid.

Troubleshooting guide

Cause	Possible remedy
<p>No charger lights</p> <p>Hearing aid is not inserted into the charging base correctly</p> <p>Charging base is not powered</p> <p>Hearing instrument does not have a rechargeable battery cell</p> <p>Charging base contacts are obstructed</p>	<p>Remove hearing aid(s) and replace in correct orientation</p> <p>Verify USB cable is properly connected to a working USB outlet</p> <p>Verify gold rechargeable battery cell is installed in the hearing instrument</p> <p>Ensure charging contacts are free from debris</p>
<p>One or both lights solid red</p> <p>Battery won't charge</p>	<p>Verify hearing aid battery is the proper gold-colored rechargeable battery</p>
<p>Both lights flashing red</p> <p>Temperature is out of range.</p>	<p>Charging is paused until temperature is in range. Move charger to an environment between 50°F (10°C) and 104°F (40°C)</p>

Contact information

Audicus, Inc.

115 W 27th St
Suite 8
New York, NY 10001

Tel: (844) 616 7284

Email: contact@audicus.com

www.audicus.com