

# Audicus

Instruction Manual

Uno

# Thank you for choosing Audicus!

We are excited for you to experience our hearing aids.

If you have any questions, feel free to contact us at  
855-971-0451 or [help@audicus.com](mailto:help@audicus.com).

# Contents

Introduction	6	Wax Guard System	23
Overview	7	Maintenance and Use	29
What's Inside	8	Returns and Warranty	32
Batteries	10	Technical Information	33
On/Off	15	FDA Information	34
Wearing the Hearing Aid	16	Warnings and Side Effects	37
Domes	19	Contact Us	38
Cleaning	22		

# Introduction

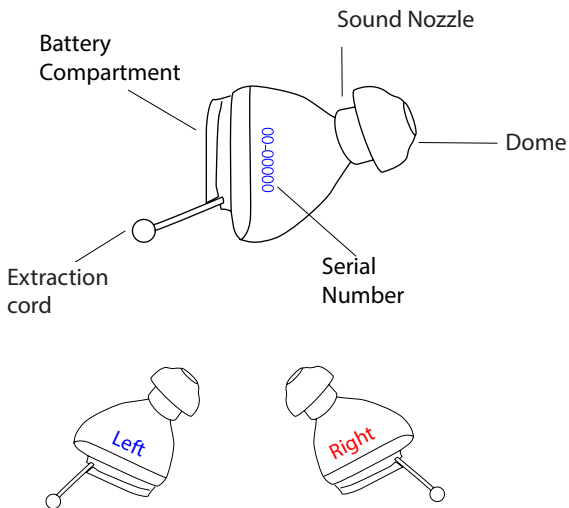
The Uno is a state-of-the-art digital hearing aid. It:

1. Is extremely discreet; nearly invisible
2. Has superior sound quality
3. Auto-adapts to all listening environments
4. Has speech filtration
5. Has feedback and noise reduction

The Uno is equipped with one memory program, customized to your hearing loss.

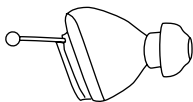
The Uno is practically invisible, as it sits deep in the ear canal. It provides excellent sound quality, and it is comfortable to wear all day long.

## Uno



# What's Inside?

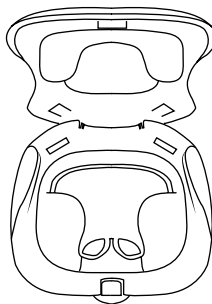
## Uno



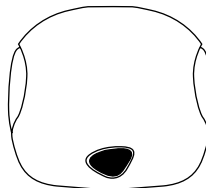
Hearing Aid



Domes

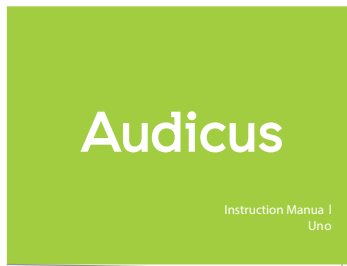


Clam Shell  
(Opened)

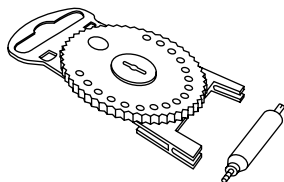


Clam Shell  
(Closed)

# What's Inside?



Manual

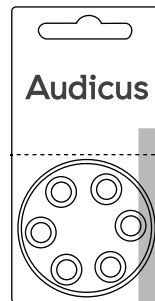


Earwax Guard Wheel  
and Insertion tool

(Magnetic end  
for extracting  
batteries)



Cleaning Brush



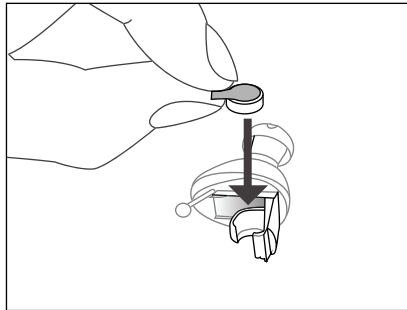
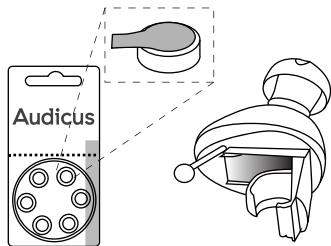
Size 10 Batteries

# Batteries

## Inserting the Battery

The Uno uses size 10 zinc batteries.

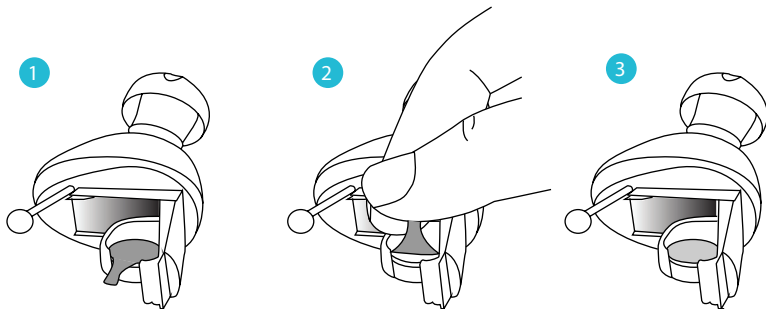
1. Place the battery into the battery compartment, with the sticker facing up.





## Inserting the Battery

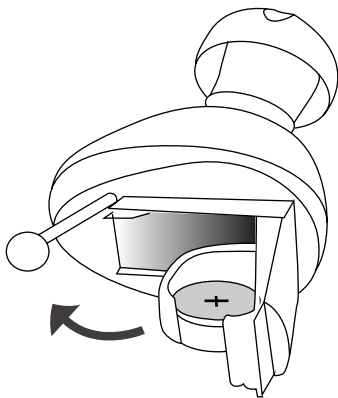
2. Peel the sticker off the new battery. The "+" sign should be visible on the battery. This activates the battery.



# Batteries

## Inserting the Battery

3. Close the battery compartment completely. Your device should now be switched ON.



## Battery Use

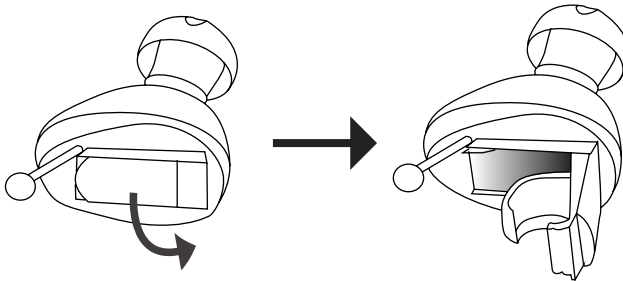
When you are not using your device (e.g. when you go to sleep) we recommend opening the battery compartment completely to preserve battery power. Leaking batteries damage the system. Please remove batteries when the hearing systems are not in use for a prolonged period of time.

## Low Battery Warning

When your battery runs low, the device will emit continuous beeps.

## Removing the Battery

To remove the battery, gently open the battery door with your fingernail. Remove the old battery. You may use the magnetic end of the Cleaning Brush to extract the battery.



# Batteries

## Battery Safety

Batteries contain harmful substances that pollute the environment:

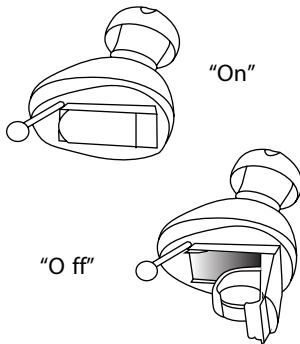
- Do not dispose of batteries in household trash.
- Dispose of batteries according to federal and local regulations.
- Never attempt to recharge batteries that are not rechargeable as this could result in an explosion.
- Keep batteries away from sources of high temperature.
- Keep batteries away from children and pets.
- Do not carry batteries loose in your pocket or purse.
- Do not place batteries in your mouth; if swallowed, consult a physician.

## Switching Your Device ON / OFF

The Uno can be switched "ON" or "OFF" through its battery compartment. When the battery door is closed, the device is switched "ON."

When the battery door is fully open, the device is "OFF."

When the device is not in use, we recommend opening the battery compartment in order to preserve battery power.



# Wearing the Hearing Aid

## Inserting the Device

1. Place the Uno between your thumb and index finger.

The side containing the serial number should face in the direction of the front of your face.

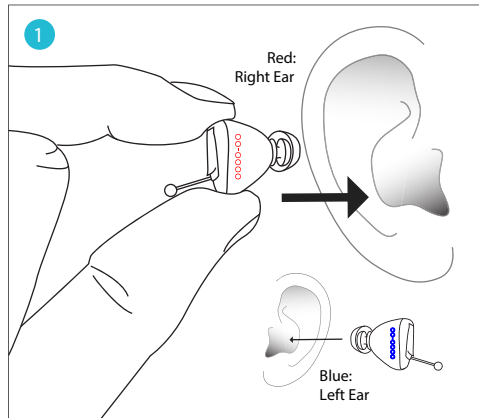
Red = Right Ear

Blue = Left Ear

2. Position the tip of the hearing aid into your ear canal.

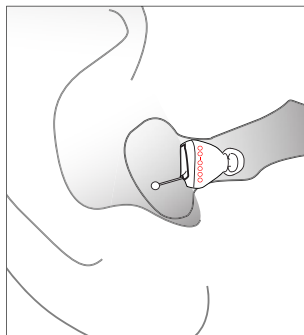
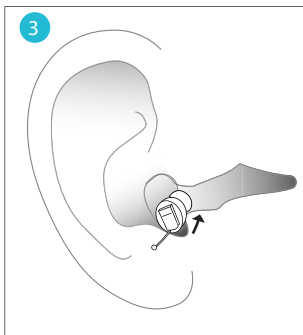
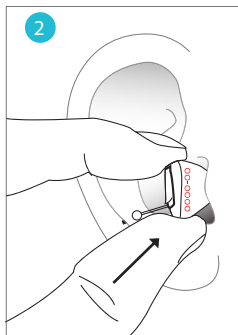
3. Push the tip upwards and into your ear canal.

The extraction cord should press against your earbowl.



# Wearing the Hearing Aid

If you have trouble inserting the hearing aid, please contact us at (888) 979-6918 for assistance.



# Wearing the Hearing Aid

## Removing the Device

To remove the hearing aid from your ear, simply pull the device outward using the extraction cord with your thumb and index finger.

Extraction of the device may be made easier by gently pulling the bottom of the ear down.

## Considerations

Handle your hearing aid with care when placing it in your ear. If it does not feel comfortable, do not attempt to alter the shape of the hearing aid.

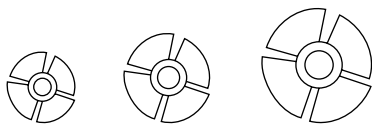
Do not use broken domes. If a dome becomes lodged in your ear, contact a medical professional for removal. If you feel physical discomfort or experience irritation, contact Audicus and/or a hearing professional.



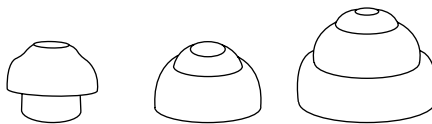
## Domes

There are three domes included with your Uno order, propeller or mushroom domes in small, medium and large. Other sizes and shapes are available upon request.

A medium-sized mushroom dome is already installed on the hearing aid when you receive it. If after properly inserting the aid in your ear you experience whistling/feedback, then the dome is too loose and must be changed to a larger size. If the medium dome is too big, switch to a smaller one.



S, M and L Propeller Domes

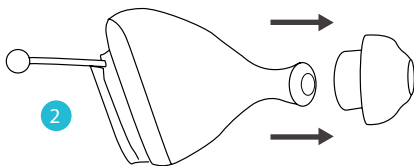
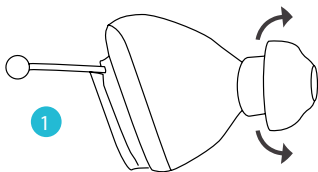


S, M and L Mushroom Domes

# Domes

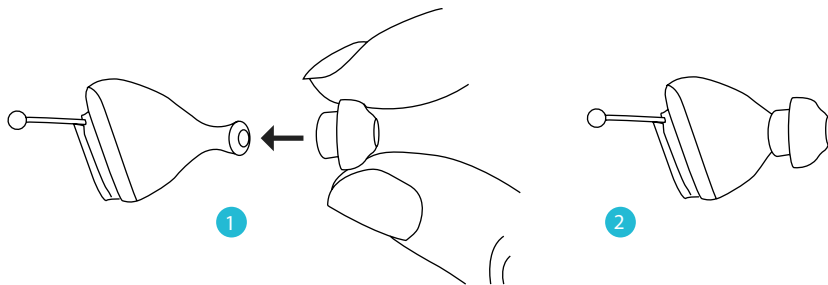
## To Remove the Domes:

After continued use the dome might wear out and need to be replaced. At that time, remove it by pulling it off and placing a new dome onto the device.



## To Attach the Domes:

Make sure the dome is properly covering the sound nozzle.



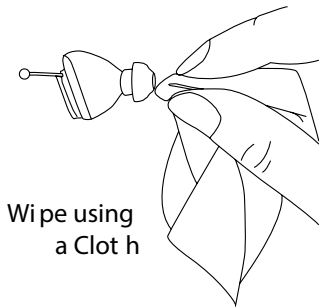
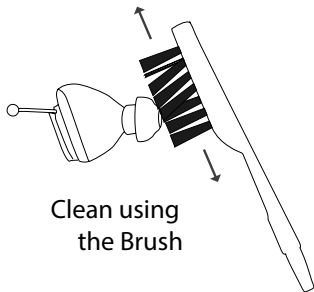
# Cleaning

## Cleaning

Cleaning your instrument regularly with the brush or a dry soft cloth will significantly prolong the life of the device.

Do not allow liquid to enter any openings on the instruments. Inspect the sound nozzle portion of the hearing aid for any wax buildup and be careful not to push wax into the opening.

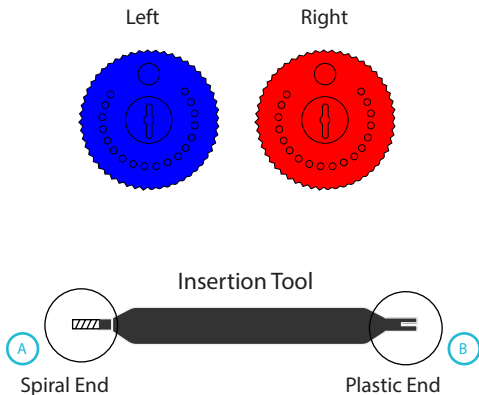
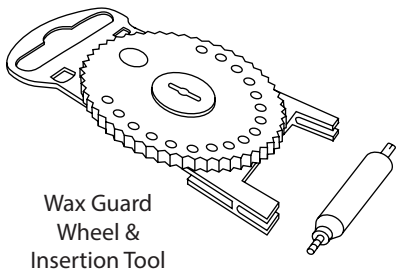
Remove earwax with the enclosed brush and consider using the Wax Guard System supplied.



# Wax Guard System

## Wax Guard System

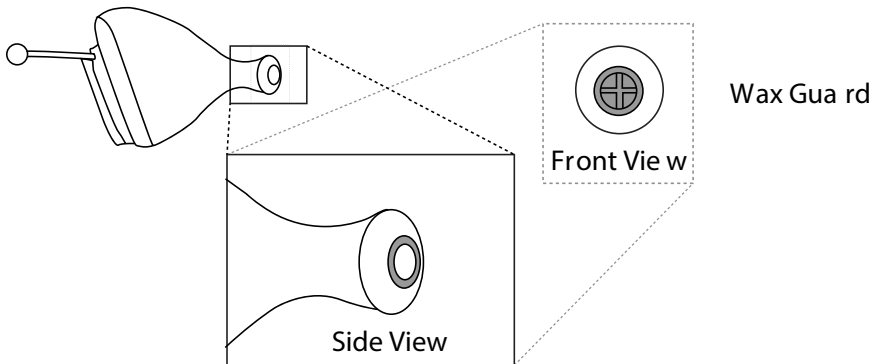
Your Uno hearing aid comes with a Wax Guard System for replacing the Wax Guard.



# Wax Guard System

For proper functioning of the hearing aid, make sure the Wax Guard remains clean and un-obstructed by using the enclosed brush.

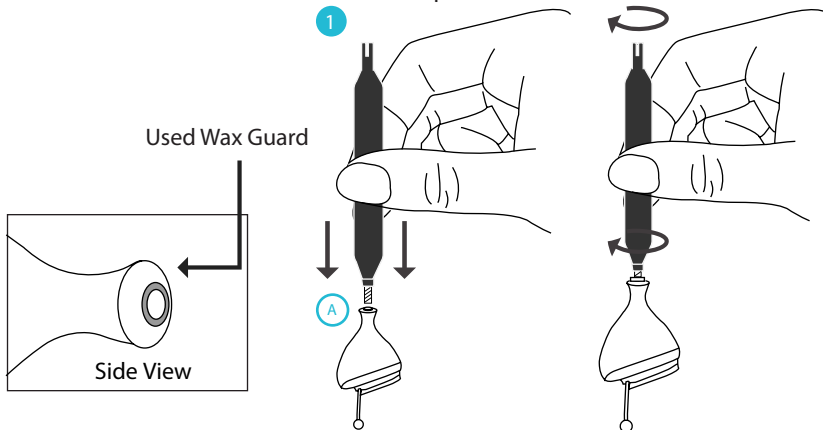
You will occasionally have to change the Wax Guard when the hearing instrument appears to be dead or weak.



# Wax Guard System

## To Remove the Wax Cover

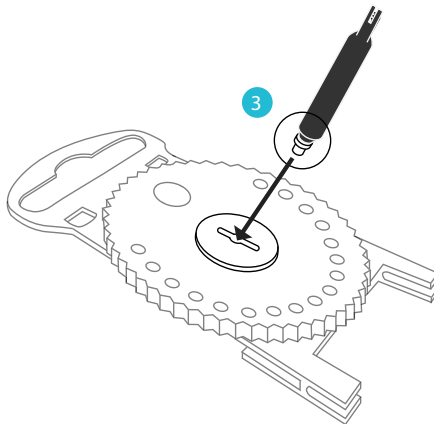
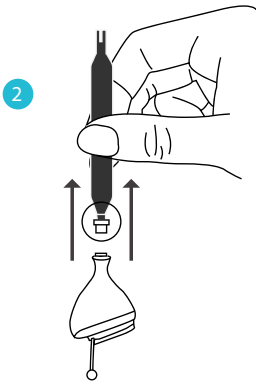
1. Insert the spiral end (A) of the insertion tool into the used Wax Guard as shown in the illustration. Screw the spiral end ~6 times to fasten.



# Wax Guard System

## To Remove the Wax Guard

2. Pull the used Wax Guard out of the hearing aid.
3. Eject the used Wax Guard into the center of the Wax Guard Wheel.

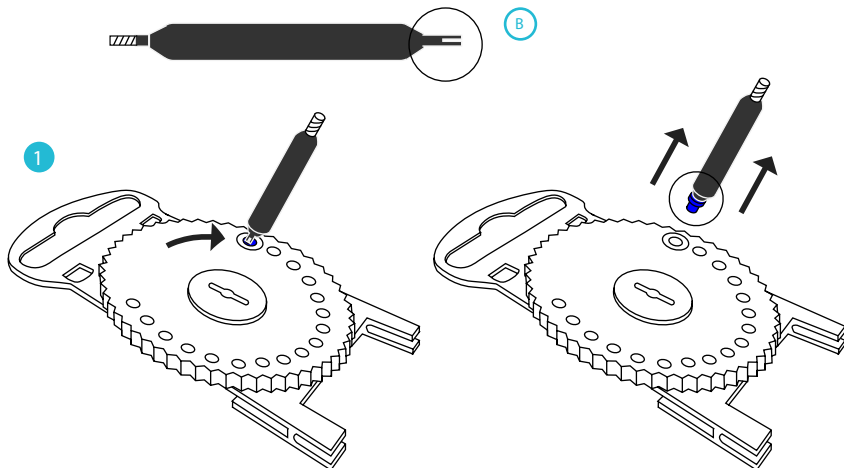




# Wax Guard System

## To Install a new Wax Guard

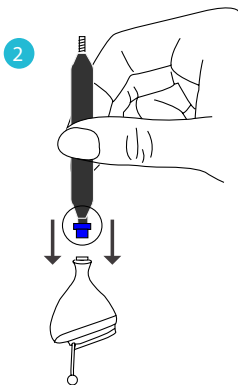
1. Remove new Wax Guard from the dial-pack using the plastic end (B) of the insertion tool that is provided.



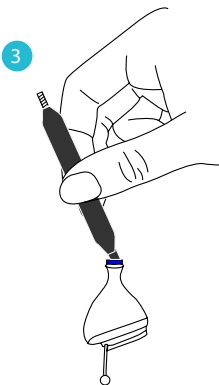
# Wax Guard System

## To Install a New Wax Guard

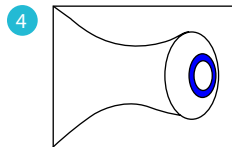
2. Insert the new Wax Guard into the hearing aid end.



3. Tilt the tool to leave the new Wax Guard inside the hearing aid end.



4. Pull the insertion tool away from the hearing instrument, leaving the new Wax Guard in place. It should be flush with the canal tip.



## Use

Your Uno is a very durable device, if handled with care. Therefore, be particularly careful in the following everyday circumstances:

### Moisture

Moisture is one of the main causes of hearing aid failure. Protect your device from moisture at all times.

Never wear your hearing aid in the shower, bath, sauna or while swimming.

Always keep the device protected when out in the rain.

If the device becomes wet, remove the battery and ensure the device is dry before using it again.

Never subject your device to hairspray, sunscreen, aftershave, perfume, gel, cream or other cosmetic/medical products.

In areas of high humidity, periodically remove the device and put it in a warm place to dry out.

Note: Your hearing aid is sensitive to extreme heat, high humidity, strong magnetic fields ( $>0.1T$ ), X-Rays, and mechanical stress.

# Maintenance and Use

## Temperature

Keep your hearing aid away from sources of high temperature at all times.

Keep it away from fires, stoves, heating systems, boilers or other heating sources.

Do not wear your hearing aid when using a hair dryer.

Do not leave your hearing aid exposed to direct sunlight for an extended period of time.

## Storage

Always remove the battery from the device when not in use for extended periods.

Always store your hearing aid in its case, in a clean and dry environment.

Keep your hearing aid from children and pets.

Consider a dehumidifier for most effective storage.

# Maintenance and Use

## Other

Do not allow others to use your instrument.

Do not wear a hearing aid when conducting an X-ray or MRI scan or exposed to strong magnetic field, high frequency field, or shortwaves.

When using cellphone, however, electromagnetic field effects cannot be ruled out.

Handle the device over a flat surface, such as a table, to avoid dropping it.

Do not alter or attempt any repairs on the device, as it might void the warranty.

Do not place your hearing system in the microwave.

In some countries, restrictions on the use of wireless equipment may apply; consult local authorities for more information.

**WARNING:** Choking hazard—small parts.

# Returns and Warranty

## The Audicus 100% Happiness Guarantee

If for any reason you are not satisfied with your Audicus hearing aid, you may return it within 45 days after ship date for a full refund of the original purchase price.

Note that we will not be able to maintain this guarantee if the device has been modified, tampered with, damaged or repaired by the user.

Please see the return instructions on the Audicus website.

## Manufacturer Warranty

All our hearing aids come with a full 12 month manufacturer guarantee that covers manufacturing defects. The guarantee will not be valid if the devices have been modified or damaged by the user, or if the serial number has been altered, or if repairs have been made without the consent and knowledge of Audicus.

If your device stops functioning correctly and you believe you have a guarantee case, please see return instructions on [www.audicus.com](http://www.audicus.com).

## Loss, Damage and Repairs

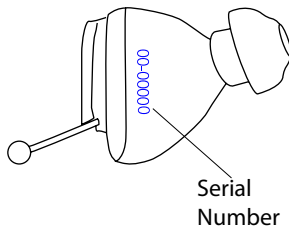
If you lose or damage your hearing aids, contact us for a discount on your next pair. Also, feel free to contact us if you think you require repairs on your hearing aid.

# Serial Identification

Where to locate serial number:

You can find your serial number on the surface of the hearing aid.

The serial number is 7 digits long.



# Technical Information

The Uno is manufactured by Hansaton Akustik GmbH Germany and distributed in USA by Audicus.

FCC-ID: WU7-WL002BTE

Operating frequencies:  $F_c = 3.28 \text{ MHz}$

Changes or modifications not expressly approved by the party responsible for compliance could void the users authority to operate the equipment.

This device complies with Part 15 of the FCC Rules. Operation is subject to the following conditions:

- (1) this device may not cause harmful interference, and
- (2) this device must accept any interference received, including interference that may cause undesired operation.

This equipment has been tested and found to comply with the limits for a Class B digital device, pursuant to Part 15 of the FCC Rules. These limits are designed to provide reasonable protection against harmful interference in a residential installation. This equipment generates, uses and can radiate radio frequency energy and, if not installed and used in accordance with the instructions, may cause harmful interference to radio communications. However, there is no guarantee that interference will not occur in a particular installation. If this equipment does cause harmful interference to radio or television reception, which can be determined by turning the equipment off and on, the user is encouraged to try to correct the interference by one or more of the following measures:

- Reorient or relocate the receiving antenna.
- Increase the separation between the equipment and receiver.
- Connect the equipment into an outlet on a circuit different from that to which the receiver is connected.
- Consult the dealer or an experienced radio/TV technician for help.



# FDA Information

## Use your hearing aids all day long

The best way to ensure better hearing is to practice listening with your hearing aids until you are able to wear them comfortably all day. Generally, infrequent use of the hearing aid does not provide you with the full benefit of amplification.

Your hearing aids will not restore normal hearing. Hearing aids will not prevent or improve hearing impairment resulting from a physiological condition. Hearing aids will help you to make better use of your residual hearing.

The use of hearing aids is only part of hearing rehabilitation; auditory training and lip reading instruction may be required as well.

## Possible Side Effects

The hearing aid or earmold is a custom-made product. If you are experiencing discomfort, see your audiologist or hearing care professional immediately for modification of the hearing aid or earmold at the point of irritation. A hearing aid or earmold may cause an accelerated accumulation of cerumen (earwax). Also in rare cases, the otherwise nonallergenic material may cause a discharge from the ear, allergic reaction, or any other unusual condition. Please seek immediate consultation with a physician if these conditions occur.

## Warning to Hearing Care Professionals

Hearing care professionals should advise a prospective hearing aid user to consult promptly with a licensed physician (preferably an ear specialist) before dispensing a hearing aid if the hearing care professional determines through inquiry, actual observation, or review or any other available information concerning the prospective user, that the prospective user has any of the following conditions:

## Warning to Hearing Care Professionals (continued):

- (i) Visible congenital or traumatic deformity of the ear.
- (ii) History of active drainage from the ear within the previous 90 days.
- (iii) History of sudden or rapidly progressive hearing loss within the previous 90 days.
- (iv) Acute or chronic dizziness.
- (v) Unilateral hearing loss of sudden or recent onset within the previous 90 days.
- (vi) Audiometric air-bone gap equal to or greater than 15 decibels at 500 hertz (Hz), 1000 Hz and 2000 Hz.
- (vii) Visible evidence of significant cerumen accumulation or a foreign body in the ear canal.
- (viii) Pain or discomfort in the ear. Special care should be exercised in selecting and fitting a hearing aid whose maximum sound pressure level exceeds 132 decibels because there may be risk of impairing the remaining hearing of the hearing aid user.

Information for U.S. users from the Federal Drug Administration, Department of Health, Education, and Welfare, Rules and Regulations for Medical Devices part 801- Hearing Aid Devices, Professional and Patient Labeling and Conditions for Sale:

Good health practice requires that a person with a hearing loss have a medical evaluation by a licensed physician (preferably a physician who specializes in diseases of the ear) before purchasing a hearing aid. Licensed physicians who specialize in diseases of the ear are often referred to as otolaryngologists, otologists or otorhinolaryngologists.

The purpose of medical evaluation is to assure that all medically treatable conditions that may affect hearing are identified and treated before the hearing aid is purchased.

Following the medical evaluation, the physician will give you a written statement that your hearing loss has been medically evaluated and you may be considered a candidate for a hearing aid.

# FDA Information

If you have reservations about your ability to adapt to amplification, you should inquire about the availability of a trial-rental or purchase-option program. Many hearing care professionals now offer programs that permit you to wear a hearing aid for a period of time for a nominal fee after which you may decide if you want to purchase the hearing aid.

Federal law restricts the sale of hearing aids to those individuals who have obtained a medical evaluation from a licensed physician. Federal law permits a fully informed adult to sign a waiver statement declining the medical evaluation for religious or personal beliefs that preclude consultation with a physician. The exercise of such a waiver is not in your best health interest and its use is strongly discouraged.

## Children with Hearing Loss

In addition to seeing a physician for a medical evaluation, a child with hearing loss should be directed to an audiologist for evaluation and rehabilitation since hearing loss may cause problems in language development and the educational and social growth of a child. An audiologist is qualified by training and experience to assist in the evaluation and rehabilitation of a child with hearing loss.

## Identification Information

The date of manufacture is incorporated into the serial number. The warranty is based upon the date of purchase, not date of manufacture.

The serial number may look like this: AE12345. The first letter of the serial number refers to the month of manufacture of the hearing aid. For example, A to M is Jan to Dec, N to Z also denote Jan to Dec. The second letter refers to the year, where every two consecutive letters can be used in one-year increments. For example, the letters E and F denote 2013, the letters G and H denote 2014, and so on. Note that the letters I and O are not used in serial numbers, and letters J and K are not used for the year 2015.

# Warnings and Side Effects

## Magnets

Magnets may interfere with medical devices (e.g. pacemakers and magnetic valves).

Use magnet only if confident of safe distance, e.g. 4 in. (10 cm) of pacemaker.

Keep magnets away from children; if swallowed seek medical attention immediately.

Magnets can disturb electrical devices and delete stored data.

Keep magnets away from computers, color monitors, television sets, CD, smartphone screens, video and audio discs, and other electronic equipment/devices.

# Warnings and Side Effects

## Other Warnings

Audicus hearing aids are intended to improve the hearing of the hearing impaired persons. Diagnosis of hearing loss and prescription of hearing system must be performed by a hearing health specialist (e.g. ENT specialist, audiologist, or hearing professional). They are not intended for anyone under 18 years of age.

Do not use your hearing aid in potentially explosive environments.

If you experience dizziness, drainage or bleeding from the ear, or sudden hearing loss, see your physician immediately.

Consult a licensed physician if you have ear canal blockage, a lasting ear infection or a plugged up fullness feeling.

Consult a licensed physician if you have ringing in one or both ears within last 90 days.

Keep hearing systems out of the reach of children, pets, and individuals with diminished mental capacity.

Hearing systems should be used only as directed and adjusted by your trained hearing system professional.

A hearing system may stop functioning, e.g. if the battery goes dead. You should be aware of this possibility, in particular if you are in traffic or otherwise depend on warning sounds.

Do not switch hearing systems between ears or allow others to wear or use your hearing systems.

Do not insert aid if foreign object is inside ear canal.

If dome is stuck inside canal, seek a medical professional immediately.

# Contact Us

Audicus, Inc.

40 Exchange Place, Suite 1820

New York, NY 10005

Tel: 855 971 0451

Email: [help@audicus.com](mailto:help@audicus.com)

[www.audicus.com](http://www.audicus.com)



